

# Alaska LRTP/FP Scenario Planning

Statewide Transportation Advisory Committee Meeting

Alaska Moves 2050

January 12, 2022

# Agenda

- Introductions and Reminders
  - What is the LRTP/FP?
  - Project Update
- Scenario Planning Discussions
  - Introduction to Scenario Planning and the TAC
  - Three Plausible Futures
- Next Steps

# What is the LRTP and FP?

- Guides planning and policy decisions for DOT&PF-owned and -managed multimodal transportation assets for the next 25 years.
- Required by federal regulation (23 CFR 450.216) to provide a clear link between policy, planning, evaluation, and the investments that are made through a cooperative statewide planning process.
- Required by Alaska State Statute (AS 44.42.050).

**Ultimately, this plan will present policy recommendations to achieve a common vision developed with stakeholders, businesses, and other federal and state partners.**

# Project Update

## Data Collection & Analysis Phase (January - October 2021)

- Transportation Assessment Technical Memorandum #1 (COMPLETE)
- Freight Assessment Technical Memorandum #2 (COMPLETE)
- Financial Analysis Technical Memorandum # (FINALIZING)

## Strategic Direction Phase

- Goals and Driving Factors Technical Memorandum #4 (November 2021)
- Scenario Planning Technical Memorandum #5 (February 2022)

## The LRTP/FP Plan Development Phase

We are HERE!





Scenario Planning- Is our transportation system ready for the challenges of the next 25 years?

---

# The LRTP Approach to Scenario Planning

Acknowledge that what may happen to Alaska with respect to certain driving forces is unknown, but by thinking through what could happen and how best to respond to those scenarios, Alaska can be better prepared to manage risk and maximize opportunities.

# Technical Advisory Committee (TAC)

Advise

State-wide Perspective

- 
- Maintenance & Operations
  - Traffic and Safety
  - Budget
  - Bridge
  - Operations
  - Research, Development, & Technology Transfer/Tribal Liaison
  - Aviation
  - Active Transportation/Rural Transit
  - Ferry
  - Data – GIS, Pavement

# Top # 3 Driving Factors of Change to Inform Plausible Futures

Economy

Funding

Workforce



# Three Scenarios / Plausible Futures



Full  
Speed  
Ahead



Cruising



Powering  
Down

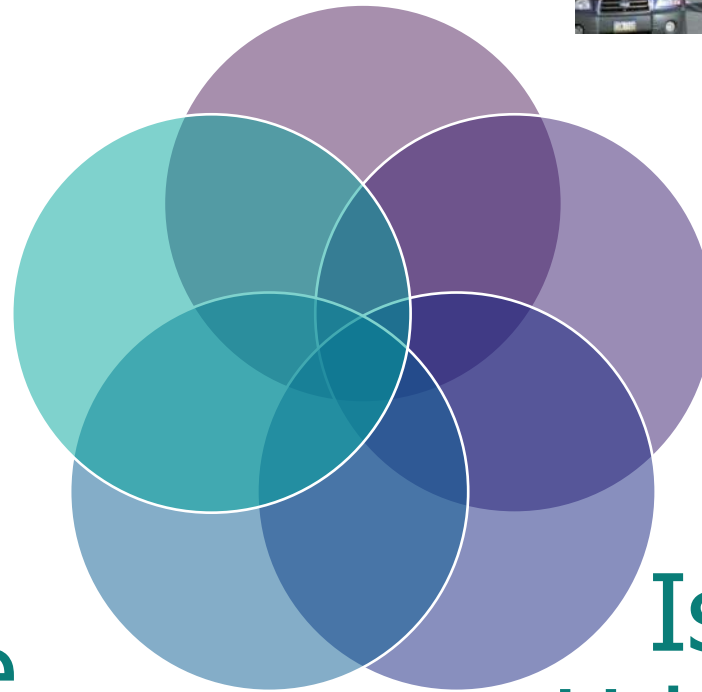
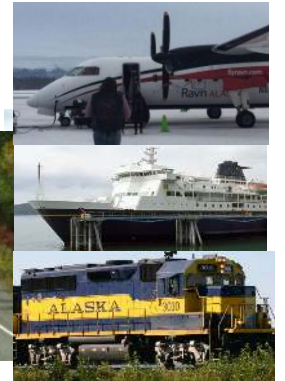
# Place Types - By Access



Urban



Rural



Isolated Remote

(more than 30 miles from primary mode)



Isolated Urban/Rural

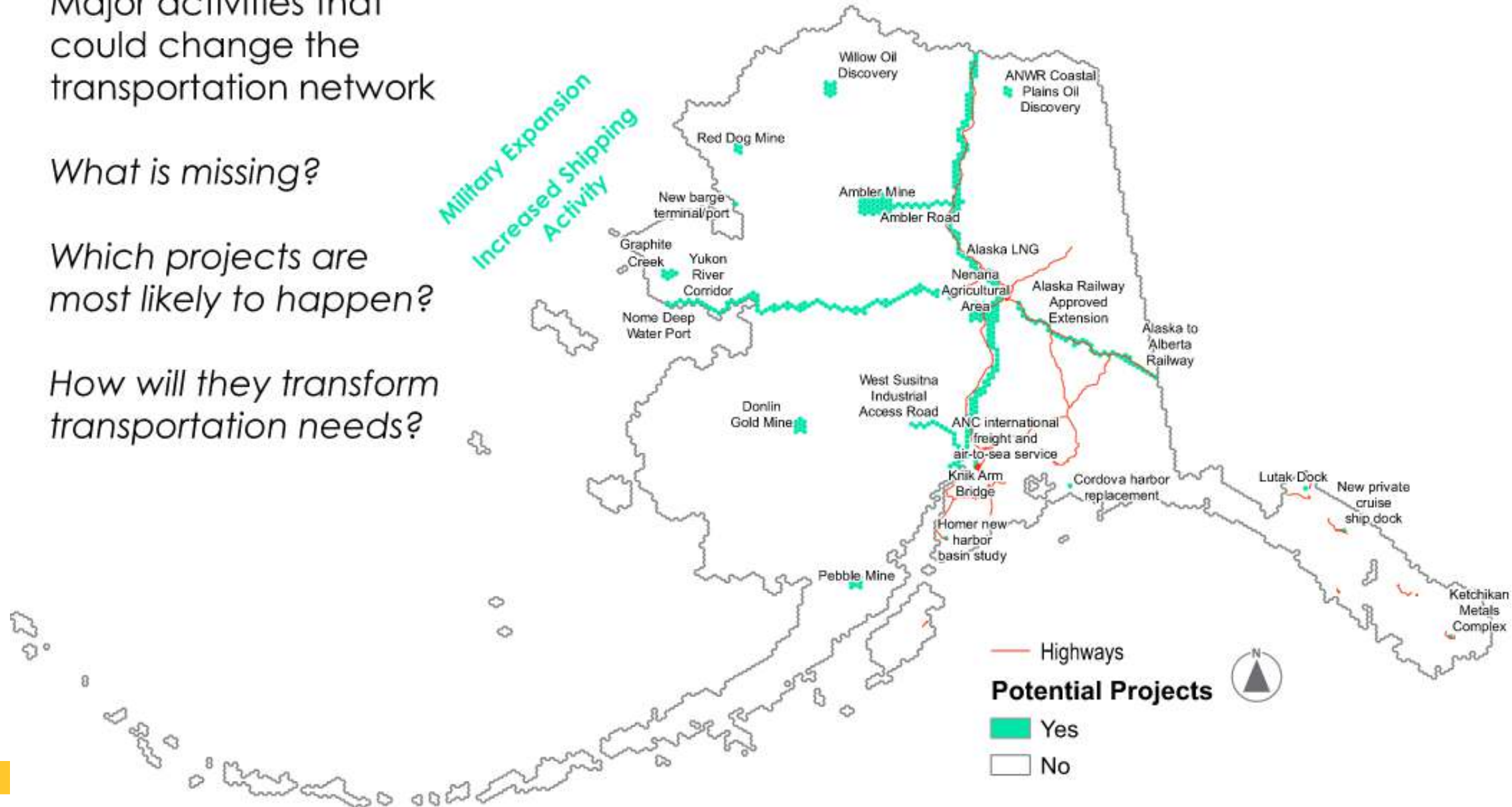


Major activities that could change the transportation network

*What is missing?*

*Which projects are most likely to happen?*

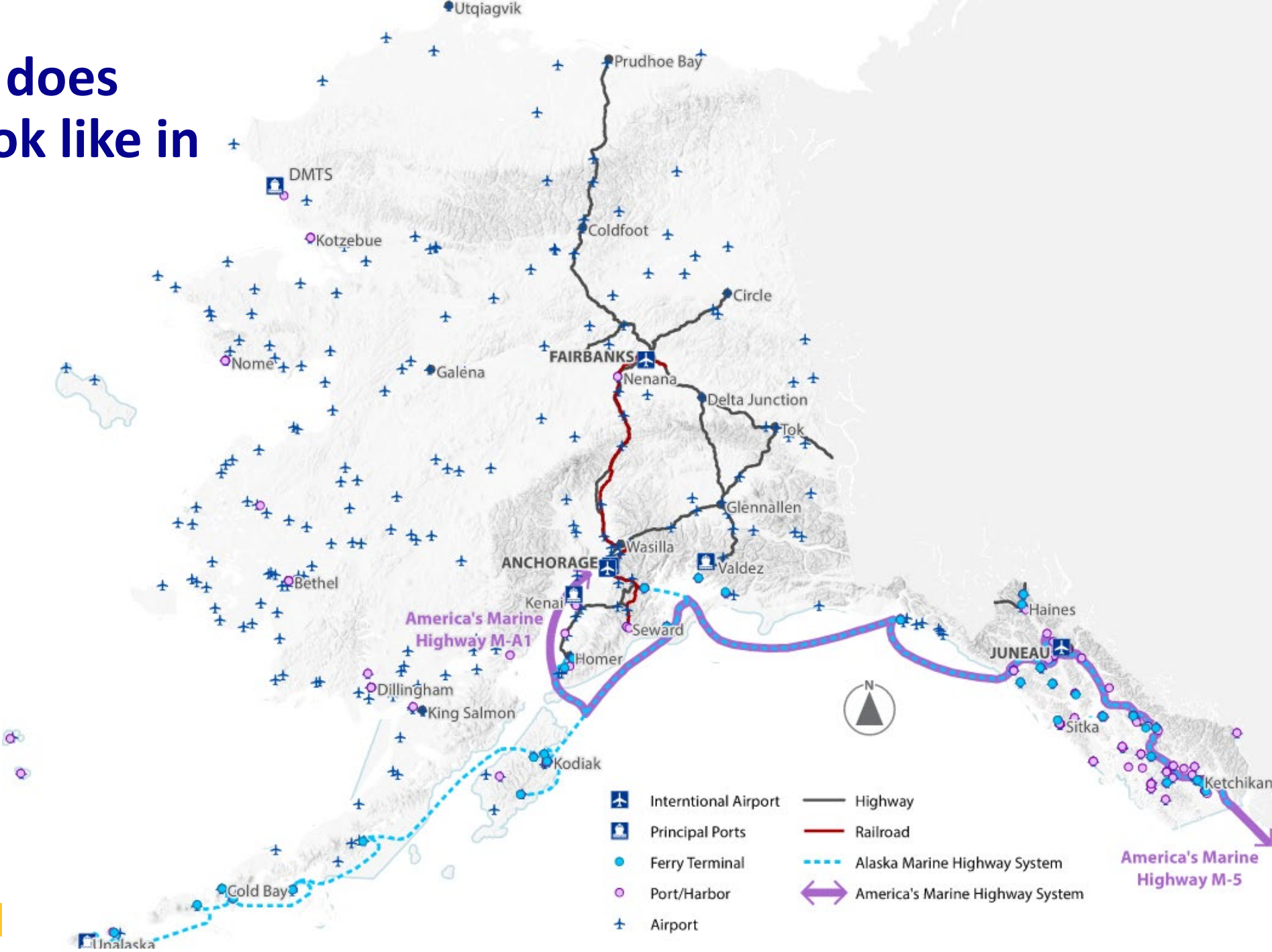
*How will they transform transportation needs?*





# Discussion: What does transportation look like in 2050 under each scenario?

- Powering Down
- Cruising
- Full Speed Ahead



# Next Steps

- Using feedback and data to compare scenarios and identify policies that maximize opportunities and minimize risks
- Public outreach event – last week of January

# How to Reach Us



[alaskamoves2050.com](http://alaskamoves2050.com)

Eric Taylor, DOT&PF Project Manager

[eric.taylor@alaska.gov](mailto:eric.taylor@alaska.gov)

907-465-8958

Wende Wilber, Consultant Project Manager

[wwilber@kittelson.com](mailto:wwilber@kittelson.com)

907-903-8461

Holly Spoth-Torres, Engagement Lead

[holly@huddleak.com](mailto:holly@huddleak.com)

907-223-0136